

Your Partner for
Uniform Supply



rizuer[®]
THE UNIFORM BRAND



Your Partner for
Uniform Supply



INTRODUCTION

Welcome to the new Rizues catalogue.
We are delighted to present our latest collection
which covers all your uniform needs.

At Rizues, we are continually developing and
improving the designs and structure of garments -
everything from pleating on our healthcare tunics to
aid movement and comfort, through to additional
pockets on our action trousers for the practical
working environment.

All our garments are developed and constructed
taking into consideration the views and feedback
from our wearer focus groups. Our philosophy is
simple - we listen, we design.

Add our wealth of experience, knowledge of garment
manufacturing and practical experience within the
industry, and the results are a complete package of
customer service focused uniform supply.



CONTENTS

Female Tunics	4 - 22	Outerwear	44 - 45
Maternity	23	Cardigans	46 - 47
Dresses	24 - 25	Site Services	48 - 51
Male Tunics	26 - 27	Businesswear	52 - 55
Female Trousers	28 - 31	Suits	56 - 59
Male Trousers	32 - 35	Aprons	60
Scrubs	36 - 39	Tabards	61
Patientwear (Dignity)	40 - 41	Catering	62 - 64
Medical Coats	42	Workwear	65
Poloshirts	43	Clogs	66

FABRIC

We use a variety of fabrics including polyester/cotton which is suitable for high temperature washing (80°C) and commercial laundry (with no colour loss - ideal where infection control measures are in place), through to soft touch polyester stretch fabrics within our blouses. Also, printed fabrics developed especially for our Patient Dignity Wear.

Polyester/cotton twill: 210gsm

Polyester/cotton lightweight: 140gsm

Polyester/cotton woven stripe: 180gsm

Polyester two way stretch

STOCK SERVICE

At Rizues we have a considerable stock holding capacity which guarantees availability and ensures main product lines are always ready for immediate despatch. Stock is held at our UK warehouse and distribution centre in Shipley, West Yorkshire - this is in addition to work in progress stock held at our production facilities overseas.

Our expertise in customer demand forecasting and inventory management is supported via specialist computer simulation forecasting models unique to this industry.

CONTRACT MANAGEMENT

At Rizues we have the personnel and expertise to manage bespoke uniform contracts within both the public and private sectors. We aim to simplify and stream line the total process including the implementation of transparent monitoring and measuring of service levels agreed. We offer a partner approach to uniform supply from garment design and development through to garment production and delivery.

WHY CHOOSE RIZUES?

- Highly competitive prices
- Immediate despatch of catalogue styles from stock
- 24/7 ordering
- Logo design and in-house application service
- Garment design and contract management facility including stock-backed bespoke wardrobe
- International distribution
- Ethically sourced products
- ISO9001 and ISO14001 certified
- NHS LSAS (Ethical Labour Standards) approved supplier

DELIVERY

Delivery to all UK mainland is £5.00 + VAT per order and FREE for order value of £250.00 and more.

Delivery is via courier or Royal Mail, within 48 hours.

Next working day express delivery is available on request.

Delivery to Northern Ireland is £14.00 + VAT.

Delivery to UK Islands, Channel Islands and Republic of Ireland is £19.00 + VAT.

International delivery charges on request.

ADDITIONAL SERVICES

Samples

We can offer a comprehensive sample service where garments are supplied on a sale or return basis - carriage chargeable and non-refundable.

Specialist Packing

Rizues wearer packs provide customers with an easy method for uniform issue when multiple departments and locations are involved. Orders can be packed by:

- Individual wearer
- Department
- Locality

Please contact our sales team on: 0345 257 0001 or email:sales@rizues.com for more information and price details.

Emblem and Logo Service

Rizues can help personalise your uniform by adding a company logo or namestyle. Our in-house emblem facility offer direct embroidery and printing.

Forward a copy of your artwork, in JPEG format, for a quotation. Application prices for embroidery start at £1.95 - initial set up cost £15 or FREE for orders of 20 or more garments.

Embroidered lettering can be added to garments for 10p per letter - choose from 6 fonts/styles of lettering and many colour options, please note a minimum charge of £1.50 per garment applies.

Please contact our sales team on: 0345 257 0001 or email:sales@rizues.com for more information or a quotation.

HOW TO ORDER

On Line (via secure payment):www.rizues.com

Telephone: 0345 257 0001

Email: sales@rizues.com

Fax: 0345 257 0002

REFUNDS & EXCHANGES

Items can be returned for refund or exchange within 14 days of order receipt providing they are unworn, have not been washed, altered or branded. Return postage is not refundable. Items lost in transit are the responsibility of the sender.

PAYMENT METHOD

We accept all major credit and debit cards.

Cheque payments will be accepted against a proforma order, please make cheque payable to: The Rizues Limited

Business Customers may pay on 30 days subject to credit approval and terms.

FEMALE TUNICS



R1 STUD TUNIC



Featuring:

- Revere collar tunic
- Quality stud front fasten
- Movement pleats
- Breast and lower pockets with extra enclosed pen pocket
- Polyester/cotton, suitable for 80°C wash
- Sizes: 80cm - 128cm (8 - 26)



Colour Options:





FEMALE TUNICS

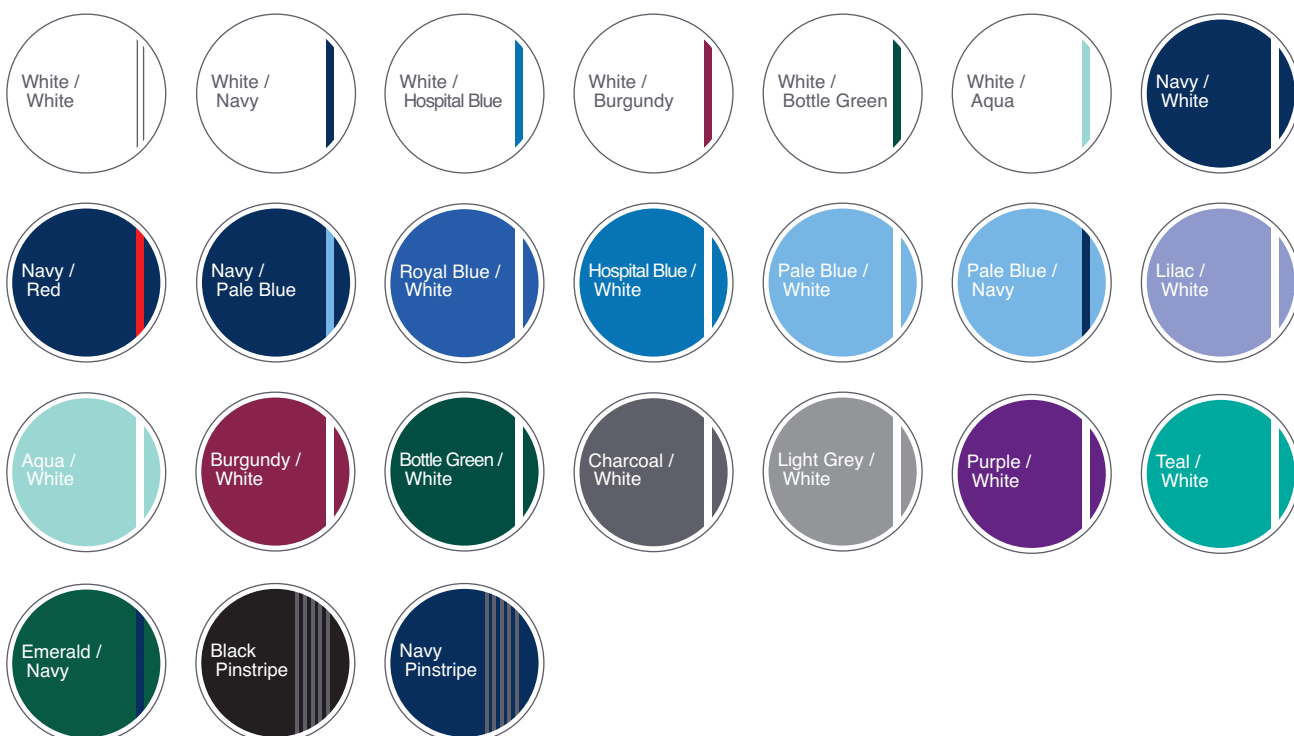
R2 ZIP TUNIC



Featuring:

- Round collar tunic
- Quality YKK front zip fasten
- Vents and movement pleats
- Breast and lower pockets with extra enclosed pen pocket
- Polyester/cotton
- Suitable for 80°C wash
- Sizes: 80cm - 128cm (8 - 26)

Colour Options:

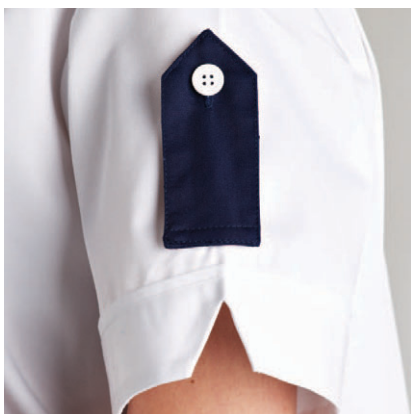
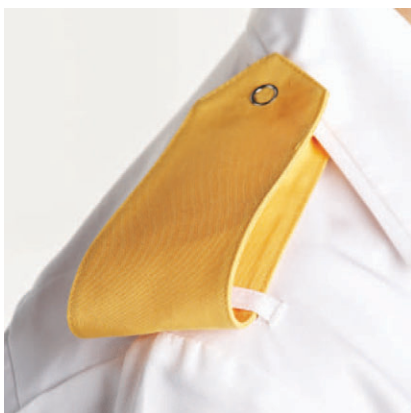




FEMALE TUNICS

R2 ZIP TUNIC

- R2 Zip tunic
- R2e Zip tunic with option
for epaulettes
- R2st Zip tunic with option
for sleeve tabs





FEMALE TUNICS

R5 REVERE ZIP TUNIC



Featuring:

- Revere collar tunic
- Quality YKK front zip fasten
- Vents and movement pleats
- Breast and lower pockets with extra enclosed pen pocket
- Polyester/cotton
- Suitable for 80°C wash
- Sizes: 80cm - 128cm (8 - 26)

Colour Options:



R4



R4 STRIPE ZIP TUNIC



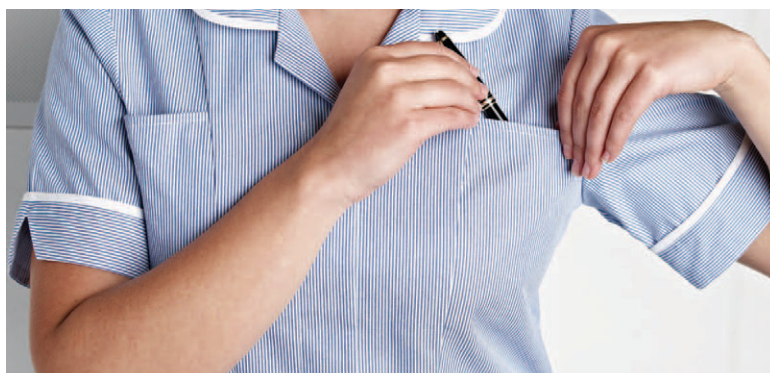
Featuring:

- Round collar tunic
- Quality YKK front zip fasten
- Side vents and movement pleats
- Breast & lower pockets with extra enclosed pen pocket
- Polyester/cotton
- Suitable for 80°C wash
- Sizes: 80cm - 128cm (8 - 26)

Colour Options:



R4



R3



R3 STRIPE STUD TUNIC



Featuring:

- Revere collar tunic
- Quality stud front fasten
- Movement pleats
- Breast & lower pockets with extra enclosed pen pocket
- Polyester/cotton
- Suitable for 80°C wash
- Sizes: 80cm - 128cm (8 - 26)

Colour Options:



R7



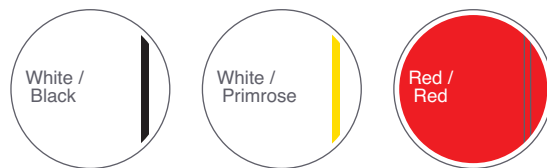
FEMALE TUNICS

R7 ZIP TUNIC

Featuring:

- Round Collar tunic
- Quality YKK front zip fasten
- Side vents and movement pleats
- Lower pockets with extra enclosed pen pocket
- Polyester/cotton
- Suitable for 80°C wash
- Sizes: 80cm - 128cm (8 - 26)

Colour Options:



R7



R10 LIGHTWEIGHT ZIP TUNIC

Featuring:

- Vents and movement pleats
- Breast and lower pockets with extra enclosed pen pocket
- Lightweight polyester/cotton
- Suitable for 60°C wash
- Sizes: S (8-10), M (12-14), MX (16-18), L (20-22), LX (24-26), 2LX (28-30)

Colour Options:



R10



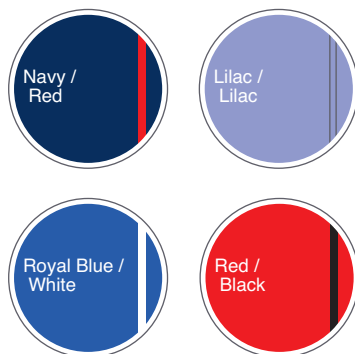
R6 SCALLOPED ZIP TUNIC



Featuring:

- Side vents and movement pleats
- Pockets with extra enclosed pen pocket
- Quality YKK front zip fasten
- Polyester/cotton, suitable for 80°C wash
- Sizes: 80cm - 128cm (8 - 26)

Colour Options:





FEMALE TUNICS

R8 CONTRAST ZIP TUNIC



Featuring:

- V neck contrast tunic
- Quality YKK front zip fasten
- Side vents and movement pleats
- Pockets with extra enclosed pen pocket
- Polyester/cotton, suitable for 80°C wash
- Sizes: 80cm - 128cm (8 - 26)

Colour Options:





FEMALE TUNICS



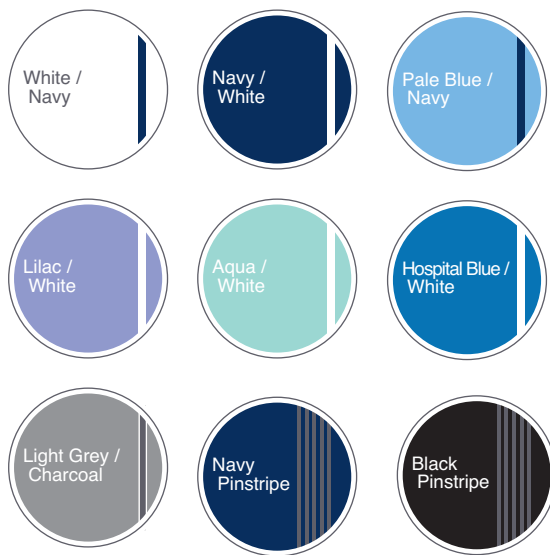
R8 CONTRAST ZIP TUNIC



Featuring:

- V neck contrast tunic
- Quality YKK front zip fasten
- Side vents and movement pleats
- Pockets with extra enclosed pen pocket
- Polyester/cotton, suitable for 80°C wash
- Sizes: 80cm - 128cm (8 - 26)

Colour Options:



FEMALE TUNICS

R11 COSSAK TUNIC

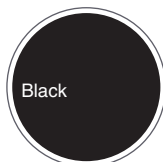
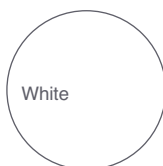


Featuring:

- Cross fasten with feature buttons
- Polyester stretch fabric
- Sizes: 6 - 24



Colour Options:



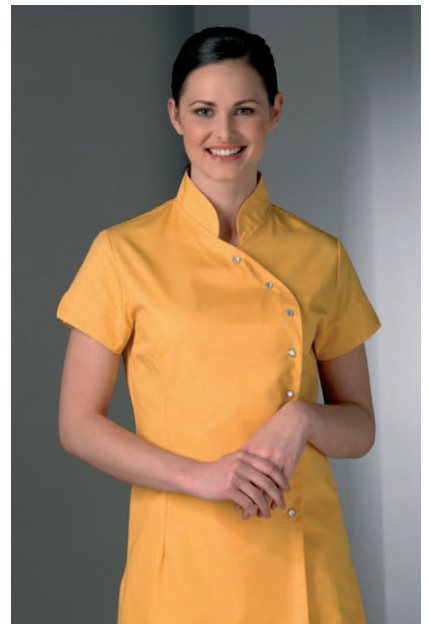
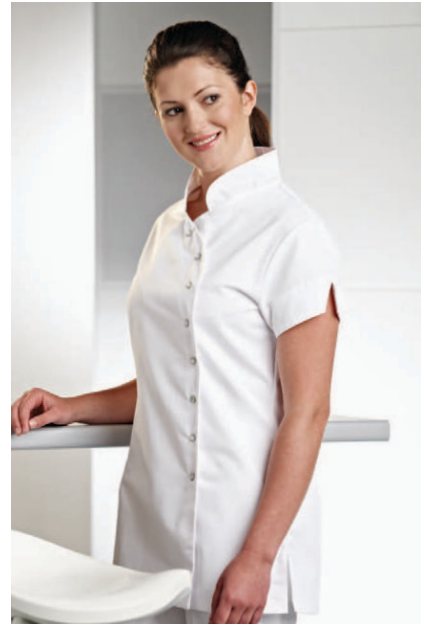
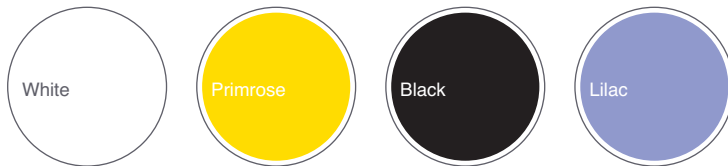
R12 ORIENTAL TUNIC



Featuring:

- Mandarin collar
- Mother of pearl stud cross fasten
- Polyester/cotton
- Sizes: 8 - 24

Colour Options:



FEMALE TUNICS

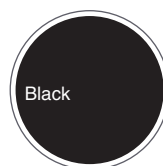
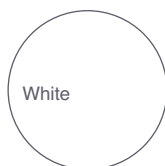
R13 VICHY TUNIC



Featuring:

- Sculpted neck with inset front zip fasten
- Polyester stretch fabric
- Sizes: 6 - 24

Colour Options:



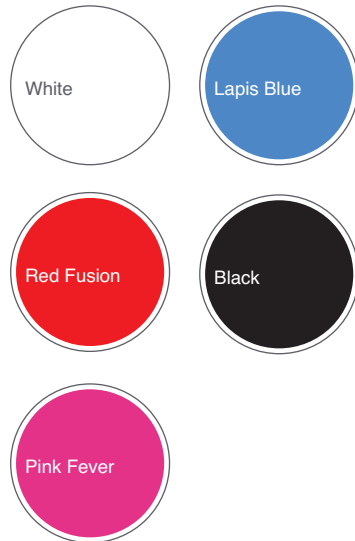
R14 FLORENTINE TUNIC



Featuring:

- Button and loop front fasten
- Polyester stretch fabric
- Sizes: 6 - 24

Colour Options:



FEMALE TUNICS

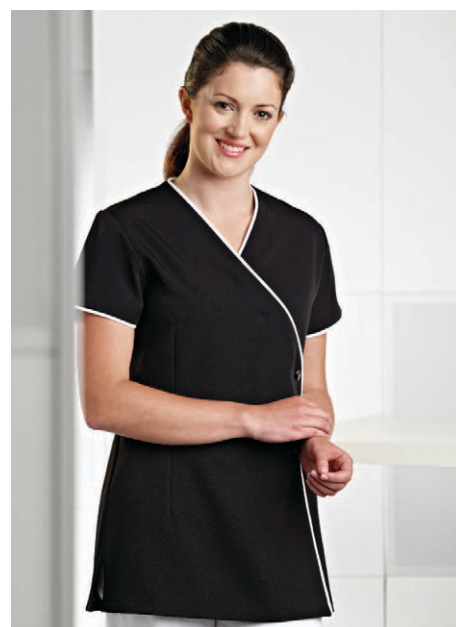
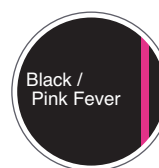
R15 VOGUE TUNIC



Featuring:

- Mock wrap with feature zip and button fasten
- Polyester stretch fabric
- Sizes: 6 - 24

Colour Options:



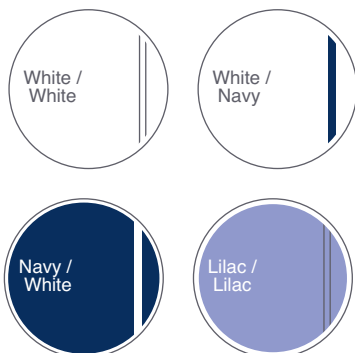
R9 MATERNITY TUNIC



Featuring:

- Vents and movement pleats
- Breast and lower pockets with extra enclosed pen pocket
- Quality YKK front zip fasten
- Polyester/cotton, suitable for 80°C wash
- Sizes: S, M, MX, L, LX

Colour Options:



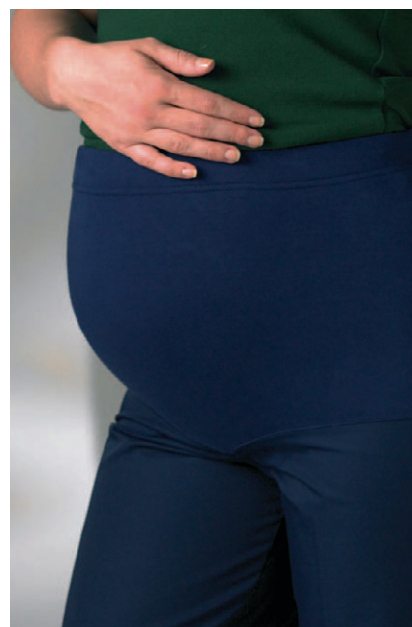
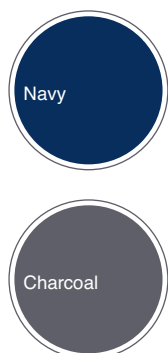
R49 MATERNITY TROUSER

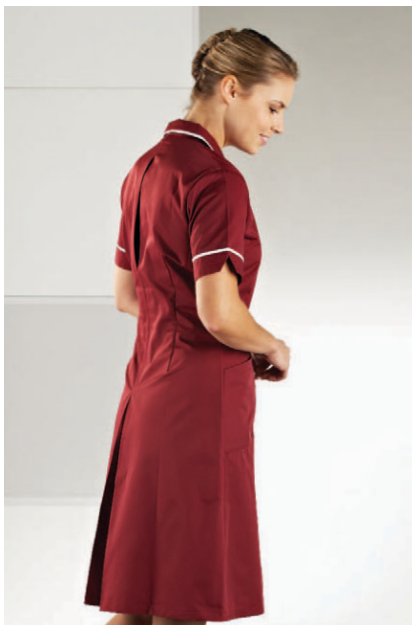


Featuring:

- Rear zip and button fasten
- Front comfort expander
- 65% polyester 35% cotton
- Sizes: S, M, MX, L, LX
- Length: 36" (unhemmed)

Colour Options:





DRESSES

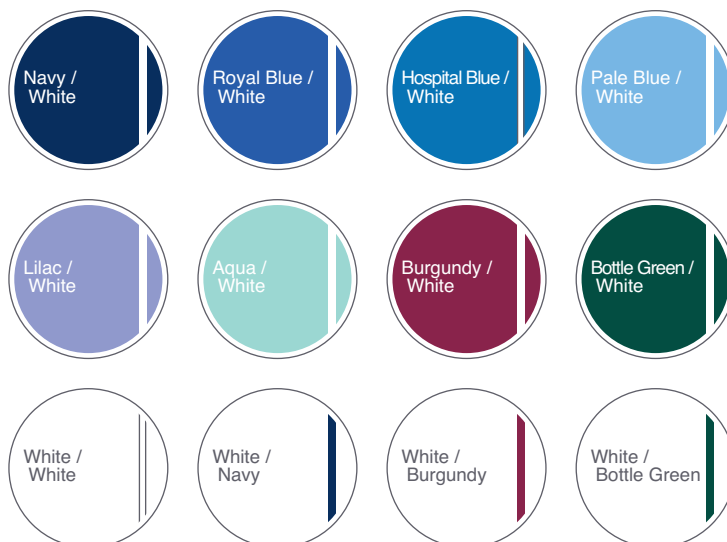
R21 STUD DRESS



Featuring:

- Revere collar dress
- Movement pleats and rear skirt pleat
- Breast and lower pockets with extra enclosed pen pocket
- Polyester/cotton, suitable for 80°C wash
- Length: 106cm (hemmed), 120cm (unhemmed)
- Sizes: 80cm - 128cm (8 - 26)

Colour Options:



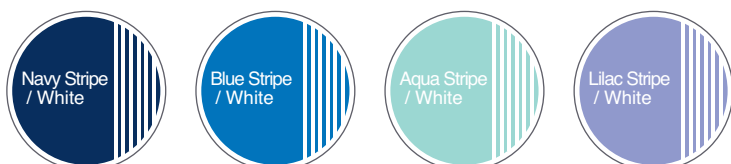
R23 STRIPE STUD DRESS



Featuring:

- Revere collar dress
- Movement pleats and rear skirt pleat
- Breast and lower pockets with extra enclosed pen pocket
- Polyester/cotton, suitable for 80°C wash
- Length: 106cm (hemmed), 120cm (unhemmed)
- Sizes: 80cm - 128cm (8 - 26)

Colour Options:



R22 ZIP DRESS

Featuring:

- Round collar dress
- Vents and movement pleats
- Breast and lower pockets with extra enclosed pen pocket
- Skirt pleats front and back
- Polyester/cotton, suitable for 80°C wash
- Length: 106cm (hemmed)
120cm (unhemmed)
- Sizes: 80cm - 128cm (8 - 26)



Colour Options:

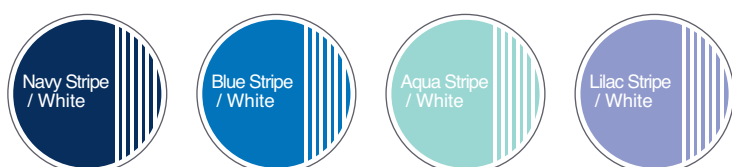


R24 STRIPE ZIP DRESS

Featuring:

- Round collar dress
- Vents and movement pleats
- Breast and lower pockets with extra enclosed pen pocket
- Polyester/cotton, suitable for 80°C wash
- Length: 106cm (hemmed)
120cm (unhemmed)
- Sizes: 80cm - 128cm (8 - 26)

Colour Options:





MALE TUNICS

R51 STUD TUNIC

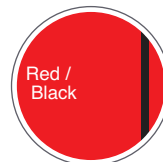
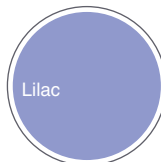
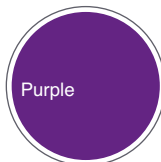
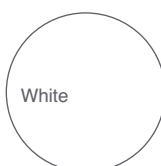


Featuring:

- Asymmetrical male tunic
- Stud fasten with adjustable neck
- Breast pocket and hip pocket
- Polyester/cotton, suitable for 80°C wash
- Sizes: S (32-34), M (36-38), MX (40-42), L (44-46), LX (48-50)



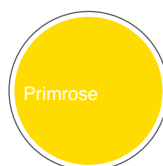
Colour Options:



R51e Stud Tunic with option for Epaulettes
R51st Stud Tunic with option for Sleeve Tabs

R176 EPAULETTES

Colour Options:



Other colours available



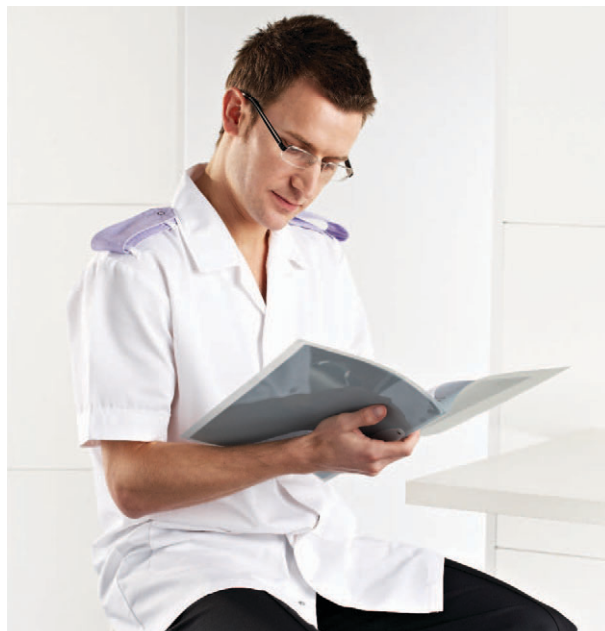
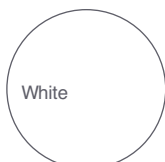
B6 STUD TUNIC



Featuring:

- Epaulette bars
- Breast and hip pockets
- Polyester/cotton, suitable for 80°C wash
- Sizes: S (32-34), M (36-38), MX (40-42), L (44-46), LX (48-50)

Colour Options:



R52 ZIP TUNIC



Featuring:

- Revere collar tunic
- Quality YKK front zip fasten
- Movement pleats
- Breast pocket and hip pockets
- Polyester/cotton, suitable for 80°C wash
- Sizes: S (32-34), M (36-38), MX (40-42), L (44-46), LX (48-50)

R52e Zip Tunic with option for Epaulettes

R52st Zip Tunic with option for Sleeve Tabs

Colour Options:



*made to order

FEMALE TROUSERS

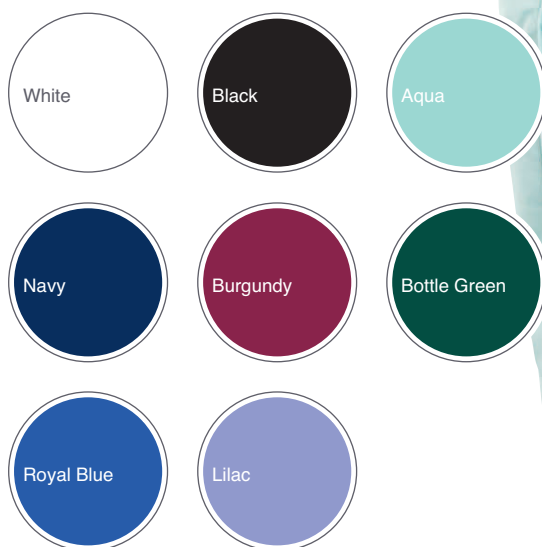
R41 BACK-ELASTICATED TROUSER



Featuring:

- Back-elastication
- Sewn-in front creases
- Polyester/cotton
- Sizes: 8 - 28
- Length: 31" (hemmed), 34" (unhemmed)

Colour Options:



R43 SIDE-ELASTICATED TROUSER



Featuring:

- Soft side movement elastication
- Hip pockets
- Polyester/cotton
- Suitable for 80°C wash
- Sizes: 8 - 28
- Length: 34" (unhemmed)
- Navy and Black also available hemmed

Colour Options:



R48



FEMALE TROUSERS

N44 COMBAT TROUSER



Featuring:

- Combat styling
- Hip and thigh pockets
- Polyester/cotton
- Sizes: 8 - 22
- Length: 33" (hemmed)

Colour Options:



R47



R48 ACTION TROUSER



Featuring:

- Soft touch fabric with water repellent treatment
- Multi-pocket with concealed zips
- Knee patches
- Part elasticated waist
- Sizes: 10 - 20
- Lengths: 27"(S), 29"(R), 31"(L)

Colour Options:



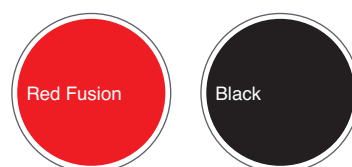
R47 FASHION STRETCH TROUSER



Featuring:

- Modern fit
- Polyester stretch
- Suitable for 40°C wash
- Sizes: 8 - 22
- Length: 34" (unhemmed)

Colour Options:



R45 STRAIGHT LEG TROUSER



Featuring:

- Modern fit
- Polyester/cotton
- Sizes: 8 - 24
- Length: 34" (unhemmed)

Colour Options:



R195 COMFORT PULL-ON TROUSER



Featuring:

- Half elasticated waist
- Rear patch pockets
- High thigh pockets
- Length: 31" (hemmed)
- Polyester/cotton
- Sizes: XS (24-26), S (26-28), M (30-32), MX (34-36), L (38-40), LX (42-44)

Colour Options:

See page 39 for image



R45



MALE TROUSERS

R61 MALE WORK TROUSER



Featuring:

- Sewn in front crease
- Double hook and bar fastening
- Polyester/cotton
- Sizes: 76cm - 116cm (28" - 45")
- Lengths: 31"(R), 33"(T)

Colour Options:





R61

N63 MALE COMBAT TROUSER



Featuring:

- Hip and thigh pockets
- Polyester/cotton
- Sizes: 28" - 46"
- Length: 35" (hemmed)

Colour Options:



R61

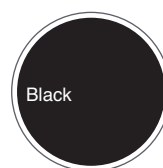
MALE TROUSERS

R63 ACTION TROUSER

Featuring:

- Front, rear, side, thigh and leg pockets
- Selective velcro and zip fastening
- Knee pad pocket
- Sewn in front crease
- Double hook and bar fastening
- Polyester/cotton
- Sizes: 28" - 52"
- Lengths: 31"(R), 33"(L)

Colour Options:

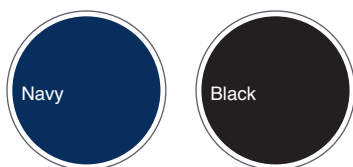


R64 PREMIUM ACTION TROUSER

Featuring:

- Soft touch fabric with water repellent treatment
- Multi-pocket with concealed zips
- Knee patches
- Part elasticated waist
- Sizes: 28" - 46"
- Lengths: 29"(S), 31"(R), 33"(L)

Colour Options:

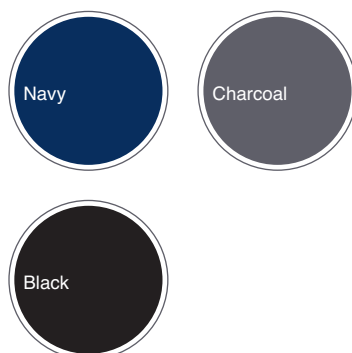


R65 MALE WAISTEASE TROUSER

Featuring:

- Classic fit
- Single pleat
- Waistease function
- Polyester/viscose
- Sizes: 28" - 54"
- Lengths: S, R, L

Colour Options:



SCRUBS





R199 ECONOMY PACK SCRUB SUIT

Featuring:

- R197 Scrub Top and R198 Scrub Trouser
- To fit chest sizes: S (32-34), M (36-38), MX (40-42), L (44-46), LX (48-50)

Colour Options:

Please see full range of colours
on page 38

R197 SCRUB TOP



Featuring:

- Unisex short sleeved top
- Breast pocket and two patch pockets
- Modesty V-neck, side vents
- Polyester/cotton
- Sizes: S (32-34), M (36-38), MX (40-42), L (44-46), LX (48-50)

R198 SCRUB TROUSER



Featuring:

- Unisex scrub trouser
- Fully elasticated waist
- Rear patch pocket
- Polyester/cotton
- Sizes: S (26-28), M (30-32), MX (34-36), L (38-40), LX (42-44)
- Length: 31" (hemmed)



SCRUBS

R197 SCRUB TOP
R198 SCRUB TROUSER
R199 ECONOMY PACK
SCRUB SUIT



Colour Options:





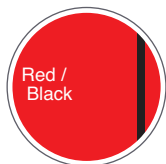
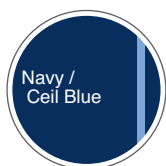
R194 FASHION SCRUB TOP



Featuring:

- Crossover mock design
- Two hip pockets
- Polyester/cotton
- Sizes: XS (28-30), S (32-34), M (36-38), MX (40-42), L (44-46), LX (48-50)

Colour Options:



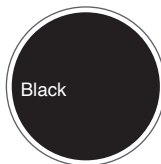
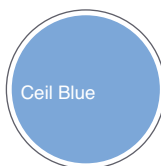
R195 FASHION SCRUB TROUSER



Featuring:

- Half elasticated waist
- Rear patch pockets
- High thigh pockets
- Polyester/cotton
- Sizes: XS (24-26), S (26-28), M (30-32), MX (34-36), L (38-40), LX (42-44)
- Length: 31" (hemmed)

Colour Options:



PATIENTWEAR



Rizues Patientware has been developed in conjunction with Sandwell and West Birmingham Hospitals NHS Trust

R801 DIGNITY PYJAMA TOP

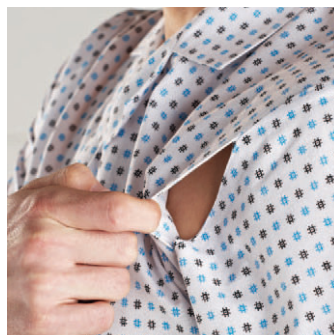
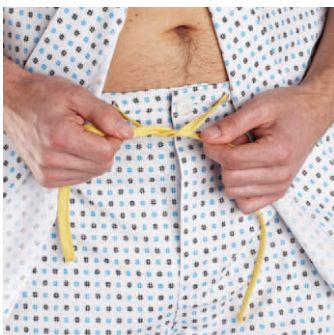
Featuring:

- Button fastening front
- Discreet medication access points below each clavicle
- Polyester/cotton print
- Sizes: S, M, L
- Size colour co-ordinated with D piece
- Colour: White/turquoise/navy

R806 DIGNITY PYJAMA BOTTOM

Featuring:

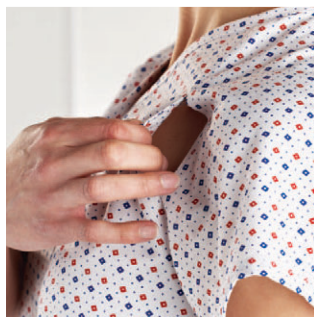
- Half elastic tensioner to rear
- Open fly construction with extended dignity flap and button secure
- Button fastening with drawstring to front
- Polyester/cotton print
- Sizes: S, M, L
- Size colour co-ordinated with drawstring
- Length: 31" (hemmed)
- Colour: White/turquoise/navy



R821 DIGNITY NIGHTDRESS

Featuring:

- V neck with 6 button fasteners to front
- Discreet medication access points below each clavicle
- Dignity construction to rear:
 - Rear top half yoke
 - Rear bottom half open with 2 extended panels stitched to yoke
- Polyester/cotton print
- Sizes: S, M, L
- Size colour co-ordinated with D piece
- Length: 112cm
- Colour: White/red/navy



MEDICAL COATS

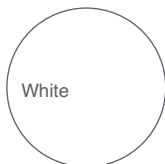
R85 LAB COAT



Featuring:

- Off centre stud fasten
- Breast pocket
- 2 lower patch pockets
- Stretch cuffs
- 65% polyester 35% cotton (210gsm)
- Suitable for 80°C wash
- Sizes: S, M, MX, L, LX, 2LX

Colour Options:



R81 STANDARD COAT - LONG SLEEVE

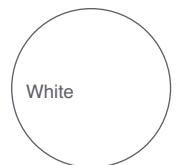


R82 STANDARD COAT - HALF SLEEVE

Featuring:

- Concealed stud fastening
- Concealed stud fasten breast pocket
- 2 lower patch pockets
- D-piece for laundry label
- 65% polyester 35% cotton (210gsm)
- Suitable for 80°C wash
- Sizes: S, M, MX, L, LX, 2LX

Colour Options:



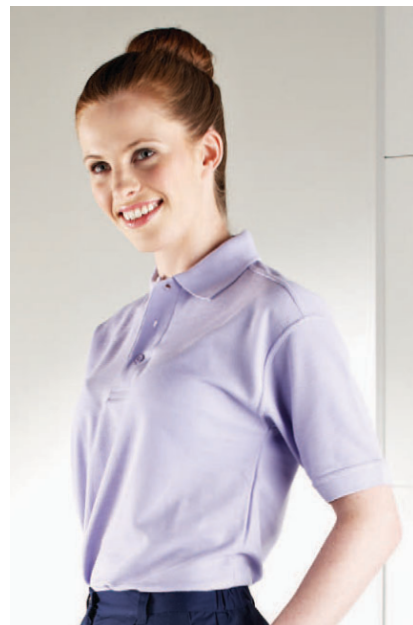
POLO SHIRTS

R100 POLO SHIRT



Featuring:

- Three button mitred placket
- Taped neckline for added comfort
- Colour matched buttons and sewn in spare
- Polyester/cotton
- Suitable for 60°C wash
- Sizes: XS, S, M, L, XL, 2XL, 3XL



Colour Options:



OUTERWEAR

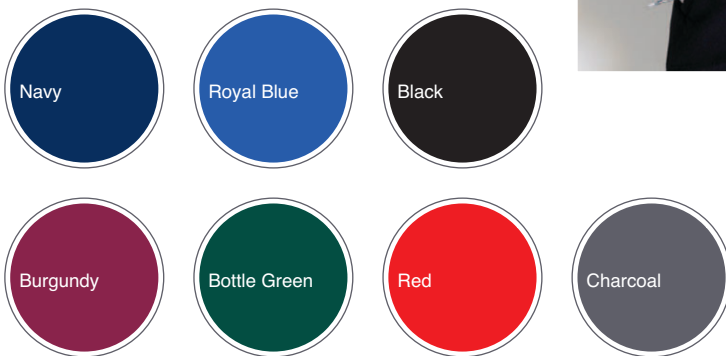
R106 UNISEX FLEECE



Featuring:

- Full zip fleece
- Elasticated cuffs
- Two zipped hip pockets
- Twin needle stitching
- Cadet style collar
- 100% polyester super anti-pilling
- Sizes: XS, S, M, L, XL, 2XL

Colour Options:

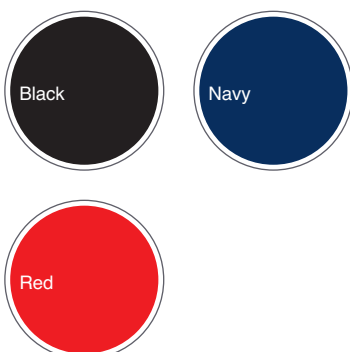


R507 SOFTSHELL JACKET

Featuring:

- Sizes: XS, S, M, L, XL, 2XL, 3XL

Colour Options:

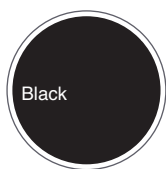


R505 OUTDOOR JACKET

Featuring:

- Fully taped waterproof seams
- Concealed hood in collar with adjuster
- Elasticated inner sleeve
- Storm flaps
- Waterproof and windproof
- Heavy duty zip fastening
- Sizes: S, M, L, XL, 2XL

Colour Options:

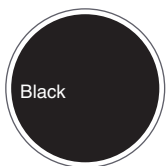


R506 OUTDOOR JACKET 3-1

Featuring:

- Two way zip fastening with storm flap
- Concealed hood, adjustable cuffs
- Waterproof and windproof
- Two zipped hip pockets and two chest pockets (one concealed)
- Inner: anti-pilling fleece with two lower zipped pockets
- Sizes: XS, S, M, L, XL, 2XL

Colour Options:



CARDIGANS

R121 STANDARD CARDIGAN

Featuring:

- V neck styling in cotton/acrylic
- Sizes: 8 -24

Colour Options:

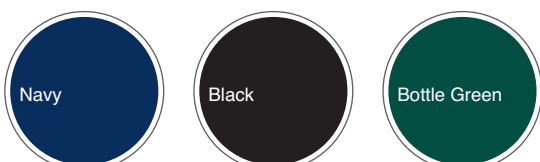


R123 LONG LINE SWEATSHIRT CARDIGAN

Featuring:

- 100% acrylic
- Sizes: S -2LX

Colour Options:

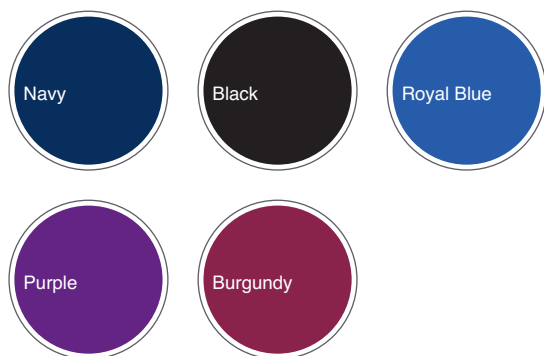


R122 CARDIGAN

Featuring:

- Womens semi-fashioned v neck cardigan in cotton/acrylic
- Sizes: 6-22

Colour Options:

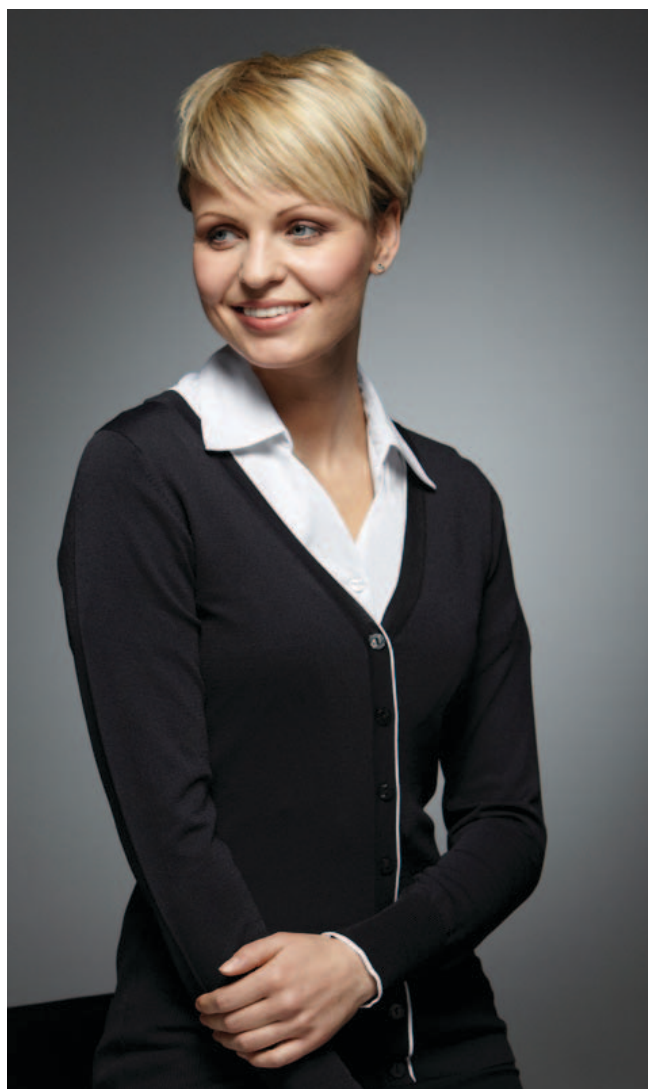


R125 JESSICA CARDIGAN

Featuring:

- Knitted crepe V neck
- Sizes: XS – 2XL

Colour Options:



SITE SERVICES

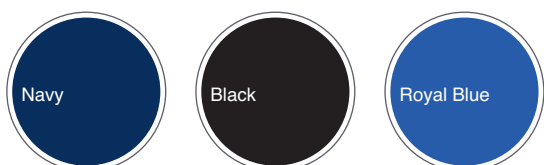


R111 SWEATSHIRT

Featuring:

- Crew neck with set in sleeve
- Twin needle stitching
- Polyester/cotton
- Sizes: S (38), M (40), L (42-44), XL (46), 2XL (48)

Colour Options:



R132 NATO JUMPER

Featuring:

- Available crew neck or V-neck
- Elbow and shoulder patches
- 100% acrylic ribbed
- Sizes: S (34-36), M (38-40), L (42-44), XL (46-48)

Colour Options:

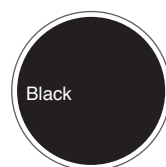


R131 V-NECK JUMPER

Featuring:

- Flat knit
- 50% acrylic 50% wool
- Sizes: S (34-36), M (38-40), L (42-44), XL (46-48)

Colour Options:

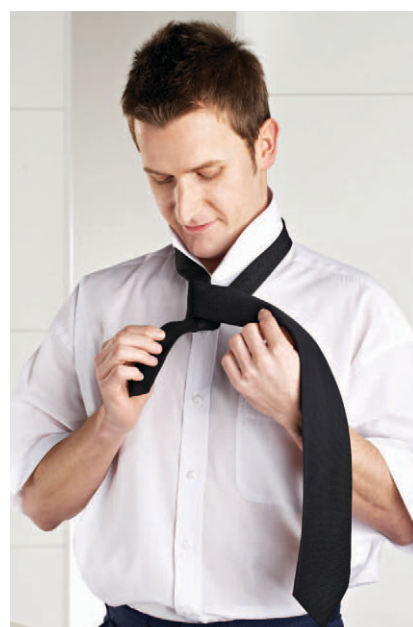
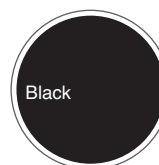


R161 CLIP-ON TIE R162 STANDARD TIE

Featuring:

- 100% polyester

Colour Options:





SITE SERVICES

N603 MALE PORTERS
SHIRT - SHORT SLEEVE
N604 MALE PORTERS
SHIRT - LONG SLEEVE



Featuring:

- 2 breast pockets with flaps
- 2 pen pockets on shoulder
- Long sleeved with button fastening
- 65% polyester 35% cotton
- Sizes (collar size): S (14"), M (15"), L (16"), XL (17"), 2XL (18"), 3XL (19")

Colour Options:



N633 FEMALE PORTERS
SHIRT - SHORT SLEEVE
N634 FEMALE PORTERS
SHIRT - LONG SLEEVE

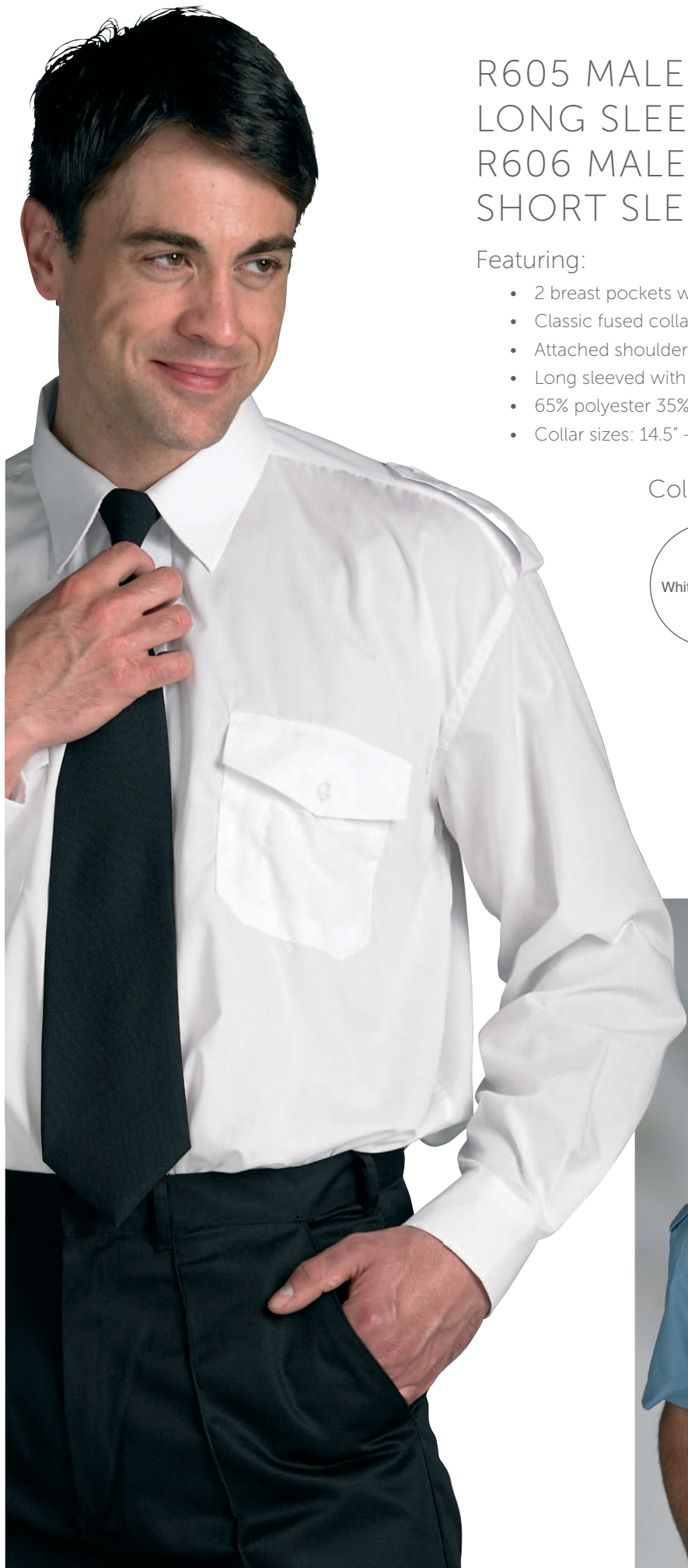


Featuring:

- 2 breast pockets with flaps
- 2 pen pockets on shoulder
- Long sleeved with button fastening
- Colour matched buttons
- 65% polyester 35% cotton
- Sizes: 6 - 22

Colour Options:





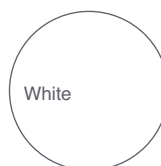
R605 MALE PILOT SHIRT - LONG SLEEVE

R606 MALE PILOT SHIRT - SHORT SLEEVE

Featuring:

- 2 breast pockets with button flaps
- Classic fused collar
- Attached shoulder epaulettes
- Long sleeved with button fastening
- 65% polyester 35% cotton
- Collar sizes: 14.5" - 18.5"

Colour Options:



BUSINESSWEAR

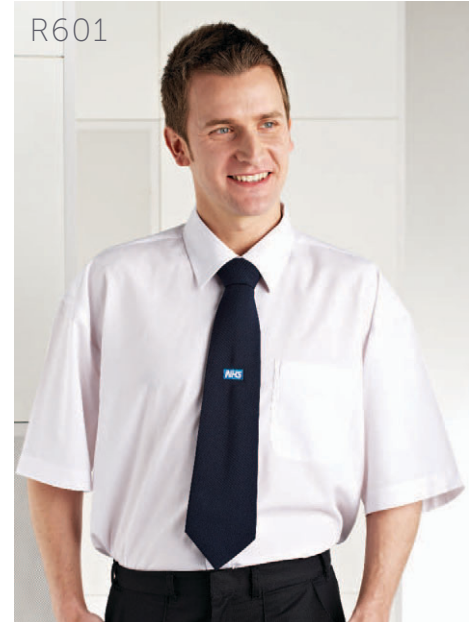
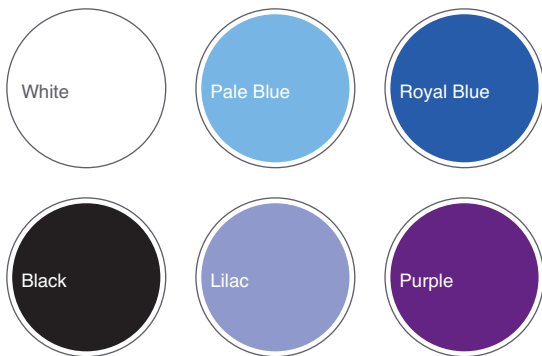
R600 MALE CLASSIC SHIRT -
LONG SLEEVE

R601 MALE CLASSIC SHIRT -
SHORT SLEEVE

Featuring:

- Breast pocket
- Easy care
- Polyester/cotton
- Collar sizes: 14.5" - 18.5"

Colour Options:



R615



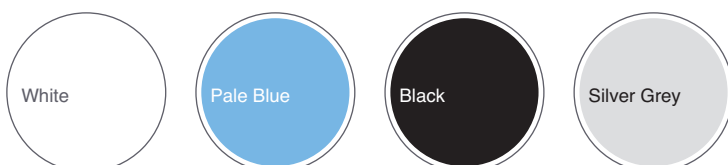
R615 MALE OXFORD SHIRT -
LONG SLEEVE

R616 MALE OXFORD SHIRT -
SHORT SLEEVE

Featuring:

- Button down collar
- 1 breast pocket
- Polyester/cotton Oxford weave
- Sizes (collar size): S (14.5"), M (15.5"), L (16.5"), XL (17.5"), 2XL (18.5"), 3XL (19.5")

Colour Options:



R616

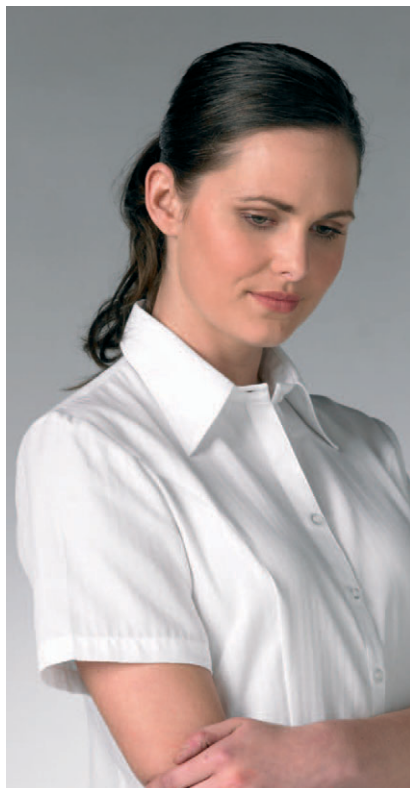
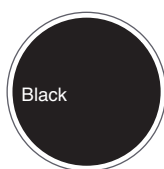
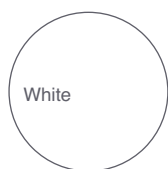


R634 VICTORIA BLOUSE - LONG SLEEVE

R635 VICTORIA BLOUSE - SHORT SLEEVE

Featuring:

- Soft collar
- Textured polyester/ cotton fabric
- Sizes: 8 - 26



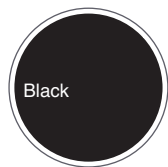
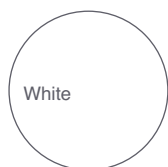
R636 MADISON BLOUSE - LONG SLEEVE

R637 MADISON BLOUSE - SHORT SLEEVE

Featuring:

- Soft collar
- Polyester stretch fabric
- Sizes: 8 - 26

Colour Options:

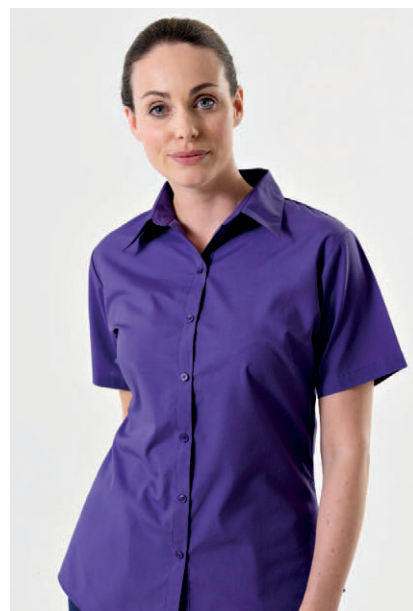
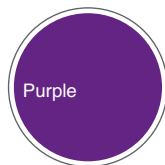
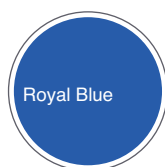


R643 POPLIN BLOUSE - SHORT SLEEVE

Featuring:

- Polyester/cotton
- Sizes: 6 - 26

Colour Options:



BUSINESSWEAR

Printed soft touch
crepe blouses,
100% polyester



R640

R640 SOFIA BLOUSE

- Sizes: 6 - 26
- Colours: Navy, Lilac, Blue

R642 ANNIKA BLOUSE

- Sizes: 6 - 26
- Colours: Berry, Blue

R644 WILLOW BLOUSE

- Sizes: 6 - 26
- Colours: Jade, Berry



R642



R644



R638

R638 ELOISE BLOUSE

- Sizes: 6 - 26
- Colours: Navy, Pale Blue

R646 OLIVIA BLOUSE

- Sizes: 6 - 26
- Colours: Navy, Pink

R647 BETH BLOUSE

- Sizes: 6 - 26
- Colours: Navy, Berry, Pale Blue

R639 INGRID BLOUSE

- Sizes: 6 - 26
- Colours: Navy, Red

R645 PIPPA BLOUSE

- Sizes: 6 - 26
- Colours: Navy, White

R639



R646



R647



R645



SUITS

R651 MALE JACKET

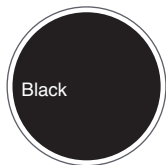
Featuring:

- Single breast modern classic fit
- 3 button fasten
- 1 breast pocket and 2 hip pockets with flaps
- 2 internal breast pockets and lower coin pocket
- 100% polyester
- Sizes: 38", 40", 42", 44", 46", 48"

R681 MALE TROUSER

Featuring:

- Modern classic fit
- Pleat front with hip pockets
- 1 rear jetted pocket with button fasten
- 100% polyester
- Sizes: 30", 32", 34", 36", 38", 40"
- Length (hemmed): 31"(R), 33"(T)



R661 FEMALE JACKET

Featuring:

- Single breast modern fit
- 1 button fasten
- Fashion lining with saddle stitch feature
- High wide lapel
- 2 slanted lower pockets with flaps
- 100% polyester
- Sizes: 8 - 26

R31 SKIRT

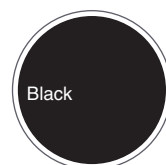
Featuring:

- Straight line
- Back zip & button fasten
- Back vent
- Fully lined
- 100% polyester
- Sizes: 8 - 26
- Length: 25"

R691 FEMALE FITTED WAIST TROUSER

Featuring:

- Modern flat front classic fit
- Flattering low waist with button and zip fasten
- Mock jetted rear pocket
- 100% polyester
- Sizes: 8 - 26
- Straight leg (unhemmed 34")



R652 MALE JACKET

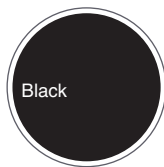
Featuring:

- Single breast modern classic fit
- 3 button fasten
- 1 breast pocket and 2 hip pockets with flaps
- 2 internal breast pockets and lower coin pocket
- Polyester/wool
- Sizes: 38", 40", 42", 44", 46", 48"

R682 MALE TROUSER

Featuring:

- Modern classic fit
- Pleat front with hip pockets
- 1 rear jetted pocket with button fasten
- Half lined
- Polyester/wool
- Sizes: 30", 32", 34", 36", 38", 40"
- Length: 37" (unhemmed)



R662 FEMALE JACKET

Featuring:

- Single breast modern classic fit
- 1 button fasten
- Fashion lining
- High wide lapel
- 2 slanted lower pockets
- Polyester/wool
- Sizes: 8 - 26

R32 SKIRT

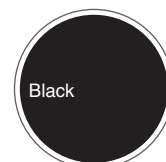
Featuring:

- Parallel straight line
- Back zip and button fasten
- Back vent
- Fully lined
- Polyester/wool
- Sizes: 8 - 26
- Length: 25"

R692 FEMALE FITTED WAIST TROUSER

Featuring:

- Modern flat front classic fit
- Flattering low waist with button and zip fasten
- 2 hip pockets
- Polyester/wool
- Sizes: 8 - 26
- Straight leg (unhemmed 34")



SUITS

Superfine Polyester

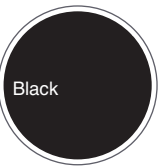


R621 FEMALE WAISTCOAT (Luna)

R622 MALE WAISTCOAT (Mercury)

Featuring:

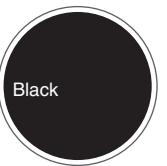
- Button front with welt pockets
- Lining backed with adjuster
- Sizes: XS - XL



R693 FEMALE TROUSER (Venus)

Featuring:

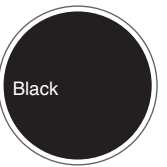
- Straight leg, slim waistband with belt loops and key loop
- Side pockets and mock rear pocket
- Sizes: 4-26
- Length: R, L, XL



R683 MALE TROUSER (Mars)

Featuring:

- Tailored fit, flat front with key loop
- Side pockets and rear pocket
- Sizes: 26-48



SUITS

Polyester Wool
Machine Washable



R663 FEMALE JACKET
(Susa & Novara)

R33 SKIRT (Numana & Bronte)

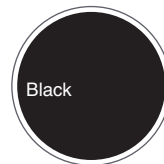
R693 FEMALE TROUSER
(Miranda)

R653 MALE JACKET (Avalino)

R683 MALE TROUSER (Avalino)



R693



R663



R33



R663



R33



APRONS

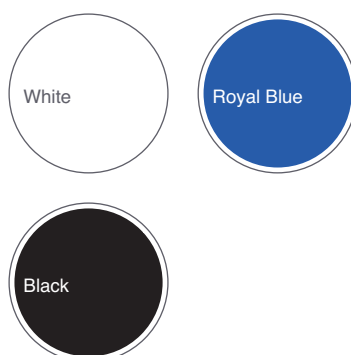
R211 CHEF'S HALF APRON



Featuring:

- Self fabric ties
- Polyester/cotton
- Size: Universal

Colour Options:



R116 TEESHIRT

Featuring:

- Sizes: S, M, L, XL
- Full range of colours available

R73 BIB APRON



Featuring:

- Self fabric ties
- Unique adjustable stud halter fasten
- Polyester/cotton
- Size: Universal

Colour Options:





TABARDS

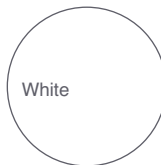
R71 TABARD WITH POCKET



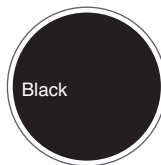
Featuring:

- Side tabs with adjustable fastening
- Self colour binding
- Length: 76cm
- Polyester/cotton
- Sizes: S, M, L, XL

Colour Options:



White



Black



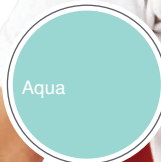
Navy



Burgundy



Royal Blue



Aqua



Red



Bottle Green



R72 TABARD WITHOUT POCKET

R71P PRE PRINTED TABARD



CATERING



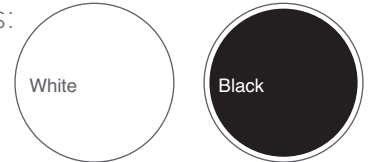
R200 CHEF'S JACKET - LONG SLEEVE



Featuring:

- Unisex jacket
- 10 buttonhole wrap over fastening
- Mandarin style collar
- D-piece for laundry label
- Detachable plastic buttons (supplied)
- Polyester/cotton
- Sizes: S (32-34), M (36-38), MX (40-42), L (44-46), LX (48-50)

Colour Options:

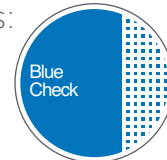


R205 CHEF'S TROUSER

Featuring:

- Unisex blue check chef's trouser
- Elasticated waist with draw string
- Self fabric side seam pockets
- 100% cotton
- Sizes: S (26-28), M (30-32), MX (34-36), L (38-40), LX (42-44)
- Length: 31" (hemmed)

Colour Options:



R201 CHEF'S JACKET - SHORT SLEEVE



Featuring:

- Unisex jacket
- 10 buttonhole wrap over fastening
- Mandarin style collar
- D-piece for laundry label
- Detachable plastic buttons (supplied)
- Polyester/cotton
- Sizes: S (32-34), M (36-38), MX (40-42), L (44-46), LX (48-50)

Colour Options:



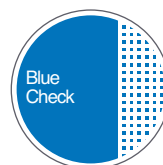
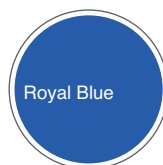
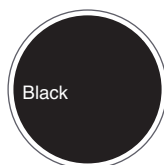
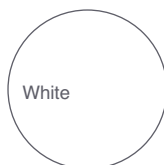


R210 CHEF'S CAP

Featuring:

- Sizes: S, M, L

Colour Options:

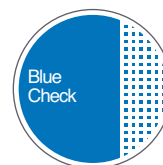
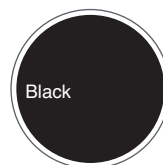
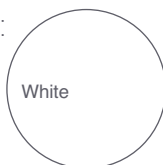


R214 CHEF'S KERCHIEF

Featuring:

- 100% cotton

Colour Options:



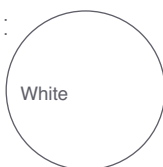
R253 UNISEX TOP - SHORT SLEEVE R254 UNISEX TOP - LONG SLEEVE

Featuring:

- V-neck with stud fastening
- Internal breast pocket
- Side vents
- D piece for laundry label
- Polyester/cotton
- Sizes: S (32-34), M (36-38), MX (40-42), L (44-46), LX (48-50)



Colour Options:



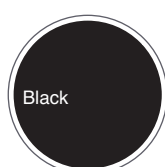
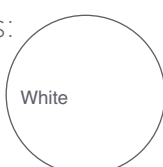
R206 UNISEX TROUSER



Featuring:

- Elasticated waist with draw string, no pockets
- Polyester/cotton
- Sizes: S (26-28), M (30-32), MX (34-36), L (38-40), LX (42-44)
- Length: 31" (hemmed)

Colour Options:



CATERING



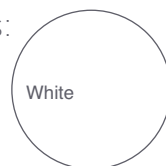
R251 FEMALE COAT R252 MALE COAT



Featuring:

- Concealed stud fastening to neck
- Internal breast pocket
- D piece for laundry label
- Polyester/cotton
- Sizes: S (32-34), M (36-38), MX (40-42), L (44-46), LX (48-50)

Colour Options:



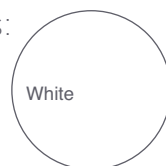
R93 BOILER SUIT



Featuring:

- Concealed stud fastening
- Internal breast pocket
- D piece for laundry label
- Polyester/cotton
- Sizes: S (32-34), M (36-38), MX (40-42), L (44-46), LX (48-50)
- Length: 31" (hemmed)

Colour Options:

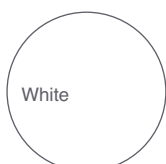


R151 CAP

Featuring:

- Size: Universal

Colour Options:

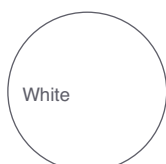


R213 NET PEAK HAT

Featuring:

- Size: Universal

Colour Options:

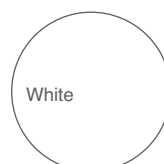


R212 TRILBY HAT

Featuring:

- Size: M

Colour Options:



WORKWEAR

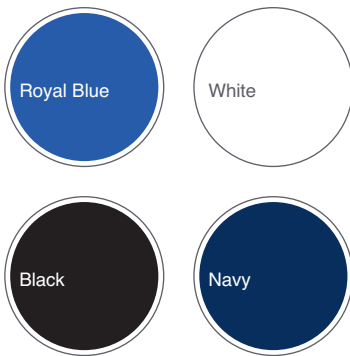
R101 COMMERCIAL POLO SHIRT



Featuring:

- Suitable for commercial laundry
- Ring stud fasten
- Polyester
- Sizes: S, M, L, XL, 2XL

Colour Options:



R511 SLEEVELESS HIGH VISIBILITY VEST

Featuring:

- EN471 specification : Class 2 approved
- Sizes: S, M, L, XL, 2XL, 3XL

Colour Options:



R512 HIGH VISIBILITY JACKET

Featuring:

- EN471 specification: Class 3 approved
- Waterproof taped seams
- Sizes: S, M, L, XL, 2XL, 3XL

Colour Options:



R513 HIGH VISIBILITY TROUSER

Featuring:

- EN471 specification: Class 1 approved
- Elasticated waist
- Sizes: S, M, L, XL, 2XL, 3XL

Colour Options:



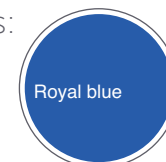
R92 BOILER SUIT



Featuring:

- Concealed stud fasten and rear pleats
- 2 breast and 2 back pockets with flaps
- 2 hip swing pockets and access slits
- 65% polyester 35% cotton (245gsm)
- Sizes: S, M, L, XL

Colour Options:



UNISEX CLOGS



R700 FLEXLITE CLOG

Featuring:

- Plain leather upper
- Slip resistant with adjustable heel strap
- Sizes: 3 - 13
- Colours: White, Navy, Black



R703 ULTRA LITE CLOG

Featuring:

- Soft leather comfort with side vent holes and slip resistant
- Sizes: 3 - 12
- Colours: White, Navy



R705 SAFETY LITE CLOG

Featuring:

- Safety clog with action breathe uppers and adjustable heel strap
- Sizes: 3 - 12
- Colours: White, Black

SIZING GUIDE

Female Tunic/Dress

Order Size	80	84	88	92	96	104	108	112	120	128	136
Dress Size	8	10	12	14	16	18	20	22	24	26	28+
Chest (inches)	31	33	34	36	38	40	42	44	46	48	52+

Female Trouser

Order Size	8	10	12	14	16	18	20	22	24	26	28	30
------------	---	----	----	----	----	----	----	----	----	----	----	----

Male Tunic

Order Size	S	M	MX	L	LX	2LX
Chest (inches)	32-34	36-38	40-42	44-46	48-50	52-54

Male Trouser

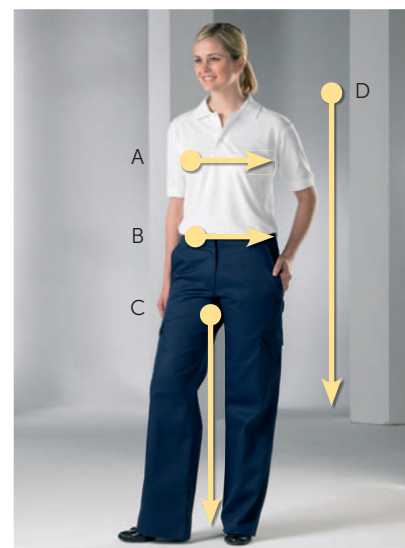
Order Size	76	80	84	88	92	96	104	108	112	116
Waist (inches)	28	30	33	34	36	38	41	42	44	45

Unisex Top

Order Size	S	M	MX	L	LX	2LX
Chest (inches)	32-34	36-38	40-42	44-46	48-50	52-54

Unisex Trouser

Order Size	S	M	MX	L	LX	2LX
Waist (inches)	26-28	30-32	34-36	38-40	42-44	46-48



A - Chest

Measure the chest around the fullest part, placing the tape close up under the arms and ensuring it is well up at the back across the shoulder blades.

B - Waist

Measure around the natural waistline over which any undergarments may be worn.

C - Trouser Length

Measure from the top of the inside leg at the crotch to the hem line.

D - Dress Length

Measure from the centre of the back of the neck to the required hem length.

TERMS & CONDITIONS FOR THE SALE OF GOODS

1 Interpretation

11 In these Conditions the following words have the following meanings: 'the Buyer' the person(s), firm or company whose written order for the Goods is accepted by the Company; 'the Company' 'The Rizues Limited registered number 4306095) whose registered office is at Quayside, Salts Mill Road, Shipley, West Yorkshire BD18 3ST; 'Conditions' these standard terms and conditions for the sale of goods; 'Contract' any contract between the Company and the Buyer for the sale and purchase of the Goods, incorporating these Conditions; under condition 4; 'Goods' any goods which the Company is to supply to the Buyer (including any part or parts of them).

12 In these Conditions references to any statute or statutory provision shall unless the context requires otherwise include a reference to that statute or statutory provision as from time to time amended, consolidated, modified, extended, re-enacted or replaced.

13 In these Conditions references to the masculine include the feminine and the neuter and to the singular include the plural and vice versa as the context admits or requires.

14 In these Conditions headings will not affect the construction of these Conditions.

2 Application of Terms

21 Subject to any variation under condition 2.3 the Contract will be on these Conditions to the exclusion of all other terms and conditions (including any terms and conditions which the Buyer purports to apply under any purchase order, confirmation of order, specification or other document).

22 No terms or conditions endorsed upon, delivered with or contained in the Buyer's purchase order, confirmation of order, specification or other document will form part of the Contract simply as a result of such document being referred to in the Contract.

23 These Conditions apply to all the Company's sales and any variation to these Conditions and any representations about the Goods shall have no effect unless expressly agreed in writing and signed by a director of the Company.

24 Each order for Goods by the Buyer from the Company shall be deemed to be an offer by the Buyer to purchase Goods subject to these Conditions.

25 No order placed by the Buyer shall be deemed to be accepted by the Company until a confirmation of order is issued by the Company in writing or by email to the address or email address provided or (if earlier) the Company delivers the Goods to the Buyer. Acceptance of delivery of the Goods shall be deemed to be conclusive evidence of the Buyer's Acceptance of these terms and conditions.

26 The Buyer must ensure that the terms of its order and any applicable specification are complete and accurate.

27 If the Goods are to be manufactured or any process is to be applied to the Goods by the Company in accordance with a specification submitted by the Buyer, the Buyer shall indemnify the Company against all loss, damages, costs and expenses awarded against or incurred by the Company in connection with, or paid or agreed to be paid by the Company in settlement of any claim for infringement of any patent, copyright, design, trademark or other industrial or intellectual property rights of any person which results from the Company's use of the Buyer's specification.

28 The Company reserves the right to make any changes in the specification of the Goods which are required to conform with any applicable statutory or EU requirements or where the Goods are to be supplied to the Company's specification, which do not materially affect their quality or performance.

29 The Company reserves the right to withdraw from sale any of the Goods contained in the Company's catalogues, brochures or website or otherwise held by the Company without first giving prior notification to the Buyer.

210 Any quotation is given on the basis that no contract will come into existence until the Company despatches an acknowledgement of order to the Buyer. Any quotation is valid for a period of 30 days only from its date, provided that the Company has not previously withdrawn it.

211 Subject to condition 4.5 no order which has been accepted by the Company may be cancelled by the Buyer except with the written consent of the Company and on terms that the Buyer will indemnify the Company in full against all losses (including loss of profit) costs (including the costs of all labour and material used), damages, charges and expenses suffered or incurred by the Company as a result of such cancellation.

3 Description

31 The description of the Goods shall be as set out in the Company's catalogues or website.

32 All drawings, descriptive matter, specifications and advertising issued by the Company and any descriptions or illustrations contained in the Company's catalogues, brochures or website are issued or published for the sole purpose of giving an approximate idea of the Goods described in them. They will not form part of this Contract.

33 The Goods, subject to the Company's receipt of the Buyer's order the Goods are not available, the Company will inform the Buyer as soon as possible, and refund or recredit the Buyer for any sum that has been paid by the Buyer or debited from the Buyer's debit or credit card for the Goods.

4 Delivery

41 Unless otherwise agreed in writing by the Company delivery of the Goods shall take place at the address provided by the Buyer to the Company.

42 Unless otherwise agreed in writing by the Company the Goods shall be delivered by such means as the Company thinks fit.

43 Any dates specified by the Company for delivery of the Goods are intended to be an estimate and time for delivery shall not be made of the essence by notice. If no dates are so specified, delivery will be within a reasonable time.

44 Subject to the other provisions of these Conditions the Company will not be liable for any loss (including loss of profit), costs, damages, charges or expenses caused directly or indirectly by any delay in the delivery of the Goods (even if caused by the Company's negligence), nor will any delay entitle the Buyer to terminate or rescind the Contract unless such delay exceeds 60 days.

45 If for any reason the Buyer does not accept delivery of any Goods when they are delivered, or the Company is unable to deliver the Goods on time because the Buyer has not provided an appropriate address or appropriate instructions, documents, licences or authorisations:

45.1 risk in the Goods will pass to the Buyer (including for loss or damage caused by the Company's negligence);

45.2 the Goods will be deemed to have been delivered; and

45.3 the Company may store the Goods until delivery and the Buyer will be liable for all related costs and expenses (including without limitation storage and insurance).

46 The Buyer will provide at its expense at the Delivery Point adequate and appropriate equipment and manual labour for off-loading the Goods.

47 The Buyer will indemnify the Company against any liability and expense (whether arising under statute or common law) caused by the Buyer's failure to provide appropriate equipment and manual labour for off-loading (whether or not the off-loading is supervised by or on behalf of the Buyer) for:

47.1 any personal injury to or death of any of the Company's employees, agents or sub-contractors or any third party; and

47.2 any damage to or loss of any property of the Company, its employees, agents or sub-contractors or any third party.

48 If the Company delivers to the Buyer a quantity of Goods of up to 70% less than the quantity accepted by the Company the Buyer shall not be entitled to object to or reject the Goods or any of them by reason of the shortfall and shall pay for such Goods at a pro rata Contract rate.

49 Where the Goods are to be delivered in instalments, each delivery shall constitute a separate contract and failure by the Company to deliver any one or more of the instalments in accordance with these Conditions or any claim by the Buyer in respect of any one or more instalments shall not entitle the Buyer to treat the whole contract as repudiated.

5 Non-Delivery

51 The quantity of any consignment of Goods as recorded by the Company upon despatch from the Company's place of business shall be conclusive evidence of the quantity received by the Buyer on delivery unless the Buyer can provide conclusive evidence in writing proving the contrary.

52 The Company shall not be liable for any non-delivery of Goods (even if caused by the Company's negligence) unless written notice is received by the Company within 10 days of the date when the Goods would in the ordinary course of events have been received.

53 Any liability of the Company for non-delivery of the Goods shall be limited to replacing the Goods within a reasonable time or issuing a credit note at the pro rata Contract rate against any invoice raised for such Goods.

6 Risk/Title

61 Risk of damage to or loss of the Goods shall pass to the Buyer at the time of delivery.

62 Ownership of the Goods shall not pass to the Buyer until the Company has received in full (in cash or cleared funds) all sums due to it in respect of:

62.1 the Goods; and

62.2 other sums which are or which become due to the Company from the Buyer on any account.

63 Until ownership of the Goods has passed to the Buyer, the Buyer must:

63.1 hold the Goods on a fiduciary basis as the Company's bailee;

63.2 store the Goods (at no cost to the Company) separately from all other goods of the Buyer or any third party in such a way that they remain readily identifiable as the Company's property;

63.3 not destroy, deface or obscure any identifying mark or packaging on or relating to the Goods;

63.4 maintain the Goods in satisfactory condition insured on the Company's behalf for their full price against all risks to the reasonable satisfaction of the Company. On request the Buyer shall produce the policy of insurance to the Company; and

63.5 hold the proceeds of the insurance referred to in condition

63.4 on trust for the Company and not mix them with any other money, nor pay the proceeds into an overdraft bank account.

64 The Buyer may resell the Goods before ownership has passed to it solely on the following conditions:

64.1 any sale shall be effected in the ordinary course of the Buyer's business at full market value; and

64.2 any such sale shall be a sale of the Company's property on the Buyer's own behalf and the Buyer shall deal as principal when making such a sale.

65 Where the Company is unable to determine whether any goods are the Goods, the Buyer shall be deemed to have sold all goods of the kind sold by the Company to the Buyer in the order in which they were invoiced to the Buyer.

66 The Buyer's right to possession of the Goods shall terminate immediately if:

66.1 the Buyer has a bankruptcy order made against him or makes an arrangement or composition with his creditors, or otherwise takes the benefit of any Act for the time being in force for the relief of insolvent debtors, or (being a body corporate) convenes a meeting of creditors (whether formal or informal), or enters into liquidation (whether voluntary or compulsory) except a solvent voluntary liquidation for the purpose only of reconstruction or amalgamation, or has a receiver and/or manager, administrator or administrative receiver appointed of its undertaking or any part thereof, or a resolution is passed or a petition presented to any court for the winding up of the Buyer, or for the granting of an administration order in respect of the Buyer, or any proceedings are commenced relating to the insolvency or possible insolvency of the Buyer; or

66.2 the Buyer suffers or allows any execution, whether legal or equitable, to be levied on his/its property or obtained against him/it, or fails to serve/perform any of his/its obligations under the Contract or any other contract between the Company and the Buyer, or is unable to pay its debts within the meaning of section 122 of the Insolvency Act 1986 or the Buyer ceases to trade; or

66.3 the Buyer encumbers or in any way changes any of the Goods;

67 The Buyer shall be entitled to recover payment for the Goods notwithstanding that ownership of any of the Goods has not passed from the Company.

68 The Buyer grants the Company, its agents and employees an irrevocable licence at any time to enter any premises where the Goods are or may be stored in order to inspect them, or, where the Buyer's right to possession has terminated, to recover them.

7 Price

71 Unless otherwise agreed by the Company in writing the price for the Goods shall be the price set out in the Company's price list provided by the Company to the Buyer.

72 The price for the Goods shall be exclusive of any value added tax and any other applicable tax which the Buyer will pay in addition when it is due to pay for the Goods.

73 Except as otherwise agreed in writing by the Company, the Buyer shall be liable to pay the Company's charges for transport, packaging and insurance, as shown in the price matrix set out in the Company's price list provided by the Company to the Buyer or on the Company's website.

74 The Company shall make a minimum delivery charge of £500 per order (ex VAT).

8 Payment

81 Unless otherwise agreed by the Company in writing, the Company may invoice the Buyer for the price of the Goods on or at any time after delivery of the Goods.

82 Payment for the Goods and delivery charges can be made by any method shown in the Company's catalogue or shown on its website.

83 Subject to any credit terms agreed by the Company in writing, payment of the price for the Goods is due 14 days from the date upon which the Goods are delivered or deemed to be delivered.

84 Time for payment shall be of the essence.

85 No payment shall be deemed to have been received until the Company has received cleared funds.

86 All payments payable to the Company under the Contract shall become due immediately upon termination of this Contract despite any other provision.

87 The Buyer shall make all payments due to the Company without any deduction whether by way of set-off, counterclaim, discount, abatement or otherwise unless the Buyer has a valid court order requiring an amount equal to such deduction to be paid by the Company to the Buyer.

88 The Company may appropriate any payment made by the Buyer to the Company to such of the Goods as the Company thinks fit despite any purported appropriation by the Buyer.

89 If the Buyer fails to pay the Company any sum due pursuant to the Contract the Buyer will be liable to pay interest to the Company on such sum from the due date for payment at the annual rate of 5% above the base lending rate from time to time of HSBC Bank Plc, accruing on a daily basis until payment is made, whether before or after any judgement. The Company reserves the right to claim interest under the Late Payment of Commercial Debts (Interest) Act 1998.

9 Warranty

91 The Company warrants that (subject to the other provisions of these Conditions) upon delivery, and for a period of 12 months from the date of delivery, the Goods will be of satisfactory quality within the meaning of the Sale of Goods Act 1994.

92 The Company shall not be liable for a breach of the warranty in condition 91 unless:

92.1 the Company receives written notice of the defect from the Buyer, within 10 days of: (a) the date of delivery (where the defect would be apparent to the Buyer upon a reasonable inspection); and
b) the date when the Buyer discovers or ought reasonably to have discovered the defect (where the defect would not be apparent to the Buyer upon reasonable inspection); and

92.2 the Company is given a reasonable opportunity after receiving the notice of examining such Goods and the Buyer (if asked to do so by the Company) returns such Goods to the Company's place of business at the Buyer's cost for the examination to take place there.

93 The Company shall not be liable for a breach of the warranty in condition 91:

93.1 if the Buyer makes any further use of such Goods after giving notice; or

93.2 if the defect arises because the Buyer failed to follow the Company's oral or written instructions as to the washing, care, storage, use or maintenance of the Goods or (if there are none) good trade practice; or

93.3 if the Buyer alters or repairs such Goods without the written consent of the Company; or

93.4 if the defect in such Goods arises from any design defect in any drawing design or specification supplied or approved by the Buyer

94 Subject to conditions 9.2 and 9.3, if any of the Goods do not conform with the warranty in condition 91 the Company shall at its option repair or replace such Goods (or the defective part) or refund the price of such Goods at the pro rata Contract rate provided that, if the Company so requests, the Buyer shall, (at the Buyer's expense), return the Goods or the part of such Goods which is defective to the Company.

95 If the Company complies with condition 94 it shall have no further liability for a breach of the warranty in condition 91 in respect of the quality of such Goods

96 Any Goods replaced will belong to the Company and any repaired or replacement Goods will be guaranteed on these terms for the unexpired portion of the 12 month period.

10 Limitation of Liability

10.1 The following provisions and the provisions of condition 9, set out the entire liability of the Company (including any liability for the acts or omissions of its employees, agents and sub-contractors) to the Buyer in respect of:

10.1.1 any breach of these Conditions; and

10.1.2 any representation, statement or tortious act or omission including

negligence arising under or in connection with the Contract.

10.2 All warranties, conditions and other terms implied by statute or common law (save for the conditions implied by section 12 of the Sale of Goods Act 1979) are, to the fullest extent permitted by law, excluded from the Contract

10.3 Nothing in these Conditions excludes or limits the liability of the Company for death or personal injury caused by the Company's negligence or for fraudulent misrepresentation. The Buyer's attention is in particular drawn to the provisions of condition 10.4

10.4 Subject to conditions 10.2 and 10.3:

10.4.1 the Company's total liability in contract, tort (including negligence or breach of statutory duty), misrepresentation or otherwise, arising in connection with the performance or contemplated performance of this Contract shall be limited to the Contract price as set out on the Buyer's order; and

10.4.2 the Company shall not be liable to the Buyer for any loss of goodwill or reputation, loss of profit or loss of sales (whether direct or indirect) or any consequential or indirect loss, damage or expense whatsoever (howsoever caused) which arises out of or in connection with the Contract.

10.5 The Buyer shall indemnify the Company against all liability, actions proceedings, costs, claims, damages or demands in any way connected with this Contract brought or threatened to be brought against the Company by any third party except to the extent the Company is liable to the Buyer in accordance with these terms and conditions.

11 Samples

11.1 Unless otherwise agreed in writing by the Company samples of the Goods ('Samples') shall be restricted to a maximum of five items per Company style;

11.2 The Samples mentioned in condition 11.1 shall be invoiced by the Company at the price notified to the Buyer by the Company at the time of the Buyer's order.

11.3 The Company shall refund the value of the Samples provided that:

11.3.1 the Samples are returned unused within 10 days of delivery; and

11.3.2 the Samples are returned to the Company carriage paid with a note

enclosed quoting the original invoice number.

11.4 If the Samples are not returned in accordance with condition 11.3 payment for the price of the Samples and the Company's charges for transport, packaging and insurance shall become immediately payable.

12 Returns

12.1 The Company shall issue a credit note for the value of the Goods provided that:

12.1.1 the Goods are returned unused, unworn, not embossed or branded, not laundered or damaged within 10 days of delivery; and

12.1.2 the Goods are returned to the Company carriage paid with a written note enclosed quoting the original invoice number and stating the reasons for the return of the Goods; and

12.1.3 the Goods have not been supplied by the Company to the Buyer in accordance with a specification submitted to the Company by the Buyer.

12.2 If the Goods are not returned in accordance with condition 12.1 payment for the price of the Goods and the Company's charges for transport, packaging and insurance shall become payable in accordance with condition 8.

12.3 The Company will impose a 10% re stocking charge where Goods are accepted for return, in writing by the Company director, outside the 10 day standard return period and are in accordance with condition 12.1.

13 Intellectual Property

13.1 The Goods or the Company's catalogue or price list advertising the Goods may contain intellectual property belonging to third parties. By advertising and supplying the Goods the Company does not purport to grant an express or implied licence to any intellectual property belonging to a third party that may be contained in the Goods or the Company's catalogue or price list. The Company assumes no responsibility for the identification, validation, discovery, disclosure, or licensing of intellectual property in the Goods or the Company's catalogue or price list. The Buyer agrees to indemnify the Company and keep it fully indemnified against all liabilities, losses, actions, proceedings, claims, costs, demands and expenses brought or made against or incurred by the Company arising by reason of the Buyer directly or indirectly using the intellectual property contained in the Goods or the Company's catalogue or price list without first obtaining the necessary consents, licences or registrations from such third parties.

13.2 The Goods or the Company's catalogue or price list may also contain intellectual property rights that belong to the Company. Without the Company's prior permission the Buyer shall not display or use in any manner the intellectual property in the Goods or the Company's catalogue or price list that belong to the Company. Any rights not expressly granted herein are reserved.

14 Assignment

14.1 The Buyer shall not be entitled to assign the Contract or any part of it without the prior written consent of the Company.

14.2 The Company may assign the Contract or any part of it to any person, firm or company.

15 Force Majeure

15.1 The Buyer shall not be deemed to be breach of these Conditions or otherwise liable to the Buyer in any manner whatsoever for any failure or delay in performing its obligations under this Agreement due to Force Majeure.

15.2 For the purpose of this condition 'Force Majeure' means, any cause preventing the Company from performing any or all of its obligations which arises from or is attributable to acts, events, omissions or accidents beyond the reasonable control of the Company including without limitation, strikes, lockouts or other industrial disputes (whether involving the workforce of the Company or any other party) act of God, war, riot, civil commotion, malicious damage, compliance with any law or governmental order, rule, regulation or direction, accident, breakdown of plant or machinery, fire, flood, storm or default of supplies or sub-contractors.

16 General

16.1 Time for performance of all obligations of the Buyer under the Contract is of the essence.

16.2 Each right or remedy of the Company under the Contract is without prejudice to any other right or remedy of the Company whether under the Contract or not.

16.3 If any provision of the Contract is found by any court, tribunal or administrative body of competent jurisdiction to be wholly or partly illegal, invalid, void, voidable, unenforceable or unreasonable it shall to the extent of such illegality, invalidity, voidness, voidability, unenforceability or unreasonableness be deemed severable and the remaining provisions of the Contract and the remainder of such provision shall continue in full force and effect.

16.4 Failure or delay by the Company in enforcing or partially enforcing any provision of the Contract will not be construed as a waiver of any of its rights under the Contract.

16.5 Any waiver by the Company of any breach of or any default under, any provision of the Contract by the Buyer will not be deemed a waiver of any subsequent breach or default and will in no way affect the other terms of the Contract.

16.6 The parties to these Conditions do not intend that any of its terms will be enforceable by virtue of the Contracts (Rights of Third Parties) Act 1999 by any person not a party to it.

16.7 The formation, existence, construction, performance, validity and all aspects of the Contract shall be governed by English law and the parties submit to the exclusive jurisdiction of the English courts.

17 Communications

17.1 All communications between the parties about this Contract must be in writing and delivered by hand or sent by pre-paid first class post or sent by facsimile transmission or email.

17.1.1 (in case of communications to the Company) to its trading address set out on the original invoice or such changed address as shall be notified to the Buyer by the Company; or

17.1.2 (in case of communications to the Buyer) to the registered office of the addressee (if it is a company) or (in any other case) to any address of the Buyer set out in any document which forms part of this Contract or such other address as shall be notified to the Company by the Buyer.

17.2 Communications shall be deemed to have been received:

17.2.1 if sent by pre-paid first class post, 2 days (excluding Saturdays, Sundays and Bank and public holidays) after posting (exclusive of the day of posting); or

17.2.2 if delivered by hand, on the day of delivery; or

17.2.3 if sent by facsimile transmission or email on a working day prior to 4.00pm, at the time of transmission and otherwise on the next working day.

Communications addressed to the Company shall be marked for the attention of a director.



The Rizues Limited
Quayside
Salts Mill Road
Shipley
BD18 3ST
West Yorkshire

Telephone: 0345 257 0001
Fax: 0345 257 0002
Email: sales@rizues.com
Website: www.rizues.com